



NewsKnight



April 2011

www.buryknightschess.org.uk

Welcome to another issue of the club magazine!

April 2011

This newsletter includes information about the past term's activities, and looks forward to the club's re-opening in September. Several members have been involved with tournaments, and almost everyone played in the UK Chess Challenge.

Don't forget that the Club will be CLOSED over the Summer Term.

Club dates for Autumn Term 2011

The club re-starts for the Autumn Term on **Friday 9 September**. The last meeting of the term will be on **Friday 9 December**. There is no meeting on **Friday 28 October** (half-term), or on the last day of term (**Friday 16 December**). There will be a total of 13 Club Evenings during the term.

Subscriptions

The weekly rate of £2.50 per member still applies. However, a discount will apply if you pay in advance for the term. This represents a 20% saving for one child, or a 40% saving for two or more children.

No. of children	Weekly	Spring Term
1	£2.50	£26.00
2 or more	£5.00	£39.00

Please bring either cash or a cheque to the first meeting of the new term. Cheques should be made payable to **Bury Knights Junior Chess Club**.

PHOTO on FRONT COVER is of the Chess Room at St Louis Middle School, where 40 children attend regularly EVERY lunchtime!

BURY ST EDMUNDS JUNIOR CONGRESS

14 Club members took part in the annual Congress at Culford School on **Sunday 27 February**. The total entry was rather disappointing, with just 55 Juniors playing.



Although no Bury Knights' members won their sections, three came second:

- Under 8 Mario Saenz (4 points)
- Under 12 Patrick Gembis (4½)
- Under 14 Sean Colliety (5)

Sean scored the same points as the eventual winner, but lost in a 5-minute Blitz game to decide the trophy.

Other scores:

- Under 10 Clement Wallace 4
- Rufus Easdale 4
- Daniel Garcia-Leon 2
- Joseph Cannard 2

- Under 12 Alba Saenz 4
- William Sait 3
- Sohan Gowda 3
- Laura Horan 3

- Under 14 George Horan 4
- Emilia Jewell 3½
- Ben Browning 2

UK Chess Challenge

www.ukchesschallenge.com

There were 17 qualifiers from the Bury Knights for the next round – the Megafinal – of this National tournament.

The **Megafinal** takes place at Woodbridge School on **Sunday 8 May**. It is hoped that all qualifiers will be able to play. All will have received their official invitations to enter.

Results from our tournament (30 played). Q = qualifier

1	Emilia Jewell	u13G	21 points	Q
2	George Horan	u14B	18	Q
3=	Haroon Majeed	u13B	17	Q
	William Sait	u11B	17	Q
5=	Sean Colliety	u14B	16	Q
	Alba Saenz	u12G	16	Q
	Eugenia Grigorieva	u14G	16	Q
8=	Sam Webster	u14B	15	Q
	Clement Wallace	u10B	15	Q
	Patrick Gembis	u12B	15	Q
	Mario Saenz	u8B	15	Q
	Daniel Garcia-Leon	u9B	15	Q
	Sohan Gowda	u11B	15	
	Matthew Marshall	u14B	15	Q
	Laura Horan	u12G	15	Q
+	Aaron Saenz	u6B	13	Q
	Thomas Field	u7B	11	Q
	Isobel Browning	u8G	10	Q

Programme for the Autumn Term

Date	Activities
9 th September	New divisions, puzzles
16 th September	Divisions & chess competition
23 rd September	Chess 960 tournament
30 th September	New divisions & puzzles
7 th October	Divisions & puzzles
14 th October	Badge tests
21 st October	Half-term tournament
28 th October	No meeting – half-term
4 th November	New divisions & puzzles
11 th November	Divisions & puzzles
18 th November	Team tournament
25 th November	New divisions & puzzles
2 nd December	Divisions & puzzles
9 th December	End-of-term tournament

Any changes to this programme will be announced at the Club.

AN INVITATION FROM IPSWICH

As our Club will be closed until September, BKJCC members are invited to attend the Ipswich Junior Chess Club, which meets every Saturday morning in term-time at Copleston High School. For more information contact Jane Drummond (Alex Sheerin's mother) on 01473 462380.

An armful of trophies!



These are the three trophies won by **Emilia Jewell** at the Suffolk Junior Open, at Woodbridge, on 13 March.

She won the Under 13 section (which was combined with the Under 14s) scoring $5\frac{1}{2}$ points out of six. The silver trophy on the right is the permanent Suffolk u13 trophy; the one on the left is a replica for her to keep. She also won the plaque in the centre for the Best Girl's performance across the whole event.

Mario Saenz won the Under 8 trophy with an immaculate 6 points out of 6, whilst younger brother **Aaron**, just six years old, came second in the same section with $4\frac{1}{2}$ points, thereby winning the Under 7 trophy.

New member **Alex Sheerin** won the Under 9 trophy with 4 points.

Other scores (and sections) were:

Alba Saenz	Under 12	$4\frac{1}{2}$	(2 nd)
Haroon Majeed	Under 13	$3\frac{1}{2}$	(3 rd)
Patrick Gembis	Under 12	$3\frac{1}{2}$	(3 rd)
Eugenia Grigorieva	Under 14	2	

Winners at Woodbridge:

Alba

Emilia

Patrick

Haroon



BURY KNIGHTS RATINGS - April 2011

+/- is difference between these ratings and March 2011.

Pos	Name	u	Apr	Mar	+/-	Divs	C/Champ	Suff	Adult
1	Emilia Jewell	13	1401	1380	+21	-15	+6	+30	
2	George Horan	14	1284	1296	-12	-32	+8		+12
3	Sean Colliety	14	1092	1050	+42	+26	+2		+14
4	Haroon Majeed	13	1073	1073	=	+2	-12	+10	
5	Sam Webster	14	1050	1050	=				
6	Alba Saenz	12	1013	999	+14	-11	+5	+20	
7	Patrick Gembis	12	943	905	+38	+23	-15	+30	
8	Mario Saenz	8	920	843	+77	+41	-4	+40	
9	William Sait	11	909	925	-16	-16	=		
10	Clement Wallace	10	893	894	-1	-18	+17		
11	Alex Sheerin	11	758	730	+28	+8		+20	
12	Daniel Garcia-Leon	9	747	728	+19	+24	-5		
13	Eugenia Grigorieva	14	741	791	-50	-14	-25	-20	
14	Ben Browning	13	740	657	+83	+83			
15	Rufus Easdale	10	721	708	+13	+6	+7		
16	William Moody	9	714	749	-35	-55	+20		
17	Matthew Marshall	14	712	718	-6	-15	+9		
18	Ewan Parkin	9	696	657	+39	+39			
19	Sohan Gowda	11	683	715	-32	-43	+9		
20	Aaron Saenz	6	663	621	+12	+12		+30	
21	Laura Horan	12	659	659	=				
22	Joseph Cannard	9	631	623	+8	+8			
23	Alfie Dry	8	630	615	+15	+15			
24	Thomas Field	7	625	600	+25	+25			
25	Sara Garcia-Leon	7	616	616	=				
26	Amaar Khan	9	613	600	+13	+13			
27	Ben Miles	10	610	610	=				
28	Ryan Stevenson	8	608	652	-44	-44			
29	Aakash Annadurai	9	605	613	-9	-8			
30	Ethan Stevenson	12	602	601	+1	+1			
31=	George Banham	9	600	600	=	-33			
31=	Isobel Browning	8	600	600	=	-11			
31=	Locklan Carroll	13	600	600	=				
31=	Max Harvey	7	600	600	=	-11			

Coaching tips for the Summer

Over the summer term, with the Club closed, most members won't be playing any chess. But that's no excuse not to do any studying.

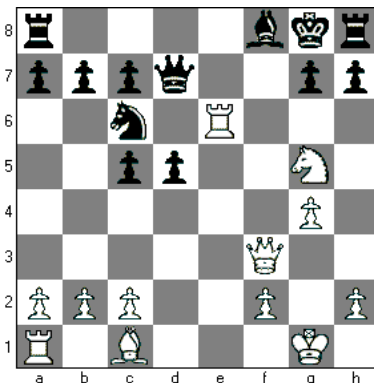
On the following pages are some coaching ideas which will help everyone to gain a better understanding of the game. It's not all about taking pieces. You have to use all sorts of clever ideas if you want to become a really good chess player.

The coaching tips are divided into four sections over the following pages: **Interception**; **Space clearance**; **Deflection**; and **Overloading**.

1 INTERCEPTION

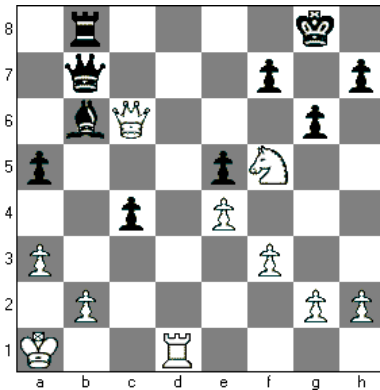
Cutting the enemy's line of communications is an important manoeuvre in any battle. It can lead to a situation where half the army doesn't know what the other half is doing.

The same tactic can be employed in chess:



The Black queen is defending the f7 square, preventing Qf7 mate. However, the interception move **Re7** throws a spanner in the works – the queen is no longer able to protect f7. If either N or B takes the rook, Qf7 can still be played. If the queen takes the rook, White plays Qxd5+ with mate next move.

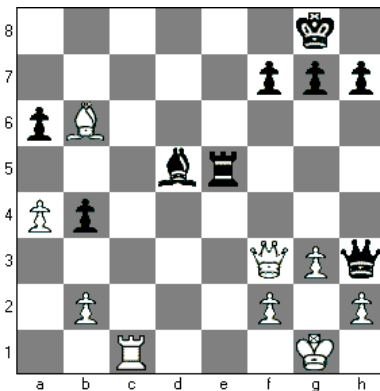
There are often weaknesses along the back rank:



White plays **Rd8+**. The rook must be captured, as otherwise it would be checkmate. If the bishop takes the rook, then Qe8 is checkmate. If the rook takes, then White wins Black's queen and should win the game.

Interception moves usually involve placing one of your pieces where it appears it can be taken. So it's a form of **sacrifice**. Be on the lookout for these sorts of moves, because they can provide a dramatic and exciting way to end a game.

Here's another example of a weak back rank. White seems to be in dire straits because his queen is attacked and if the queen moves off the diagonal, Black would play Qg2 checkmate. Can you spot how the back rank weakness can be exploited? Warning – this is difficult!



Unfortunately, the c8 square is protected by Black's queen, so White can't play Rc8. He also can't play Rd1, because all Black has to do is play h6. Then, if Rxd5, Re1 mate. The winning move is very clever – it's **g4**. Now the Black queen is attacked and the diagonal from h3 to c8 is blocked. The g4 move is an **interception**.

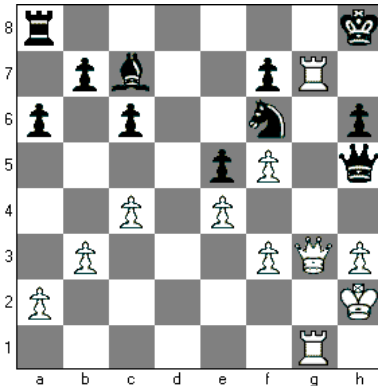
If you solved that one, you're doing well! Now on to the next theme....

2 SPACE CLEARANCE

If your bedroom is so untidy that you can't get to the cupboard to open it, then you have to clear a space in order to reach it.

The same thing can happen in chess. A square or a diagonal may need to be cleared, either of your own or your opponent's pieces, so that you can play a winning move.

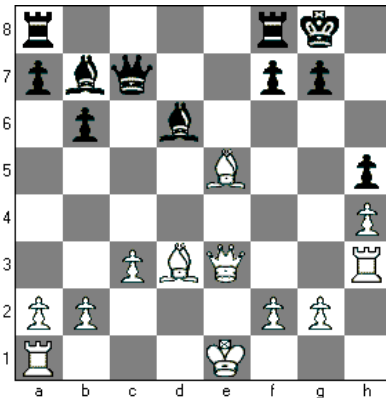
Consider this position:



If the White rook on g7 wasn't there, White could play Qg7 checkmate.

So White plays Rh7+ and if either Nxh7 or Kxh7, then Qg7++

Sometimes a diagonal needs to be cleared:



It's White to play. White has a strong attack on the kingside, but can he break through?

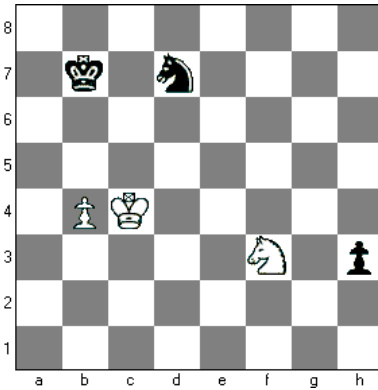
White plays **Qh6**, threatening checkmate on h7. Black has to take the queen with the g-pawn, which removes that pawn from g7, opening the diagonal for the bishop. Now White can play **Rg3** checkmate!

Try and imagine the position without the obstructing piece in the way. Look for a way of removing the obstructing piece without loss of time. In other words, create a threat, such as checkmate, or make a forcing move, i.e. check.

3 DEFLECTION

In modern warfare, an enemy missile can be deflected so that it misses its original target.

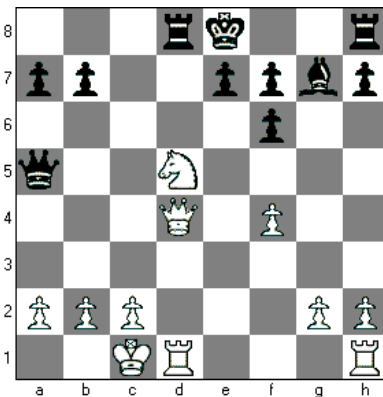
A chess piece can also be deflected so that it can no longer perform the earlier task it was required to do. Consider this position:



White's knight is preventing Black's pawn from queening. If the knight could be **deflected**, then Black should win.

So Black plays 1... Ne5+. After 2. Nxe5 h2, the pawn queens.

Here's another example. White would like to play Nc7+, but Black's queen is protecting c7. Can you see how the queen can be deflected?



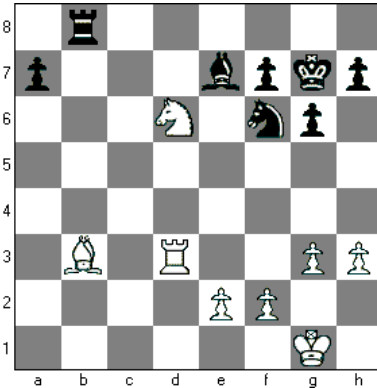
White plays **Qa4+**. After Qxa4, White checkmates with 2. Nc7+ Kf8, 3. Rxd8+ Qe8 4. Rxe8 mate.

The key here is to recognise the weak link in your opponent's position and then to take full advantage of it.

4 OVERLOADING

We all suffer from overloading. For example, you may have lots of homework to do, a friend coming round to see you, a TV programme you wanted to watch....

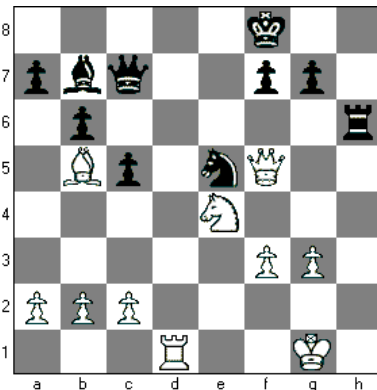
The same fate can befall a chess piece – it can have too much to do at the same time. Look at this example:



The White rook is **overloaded** because it has to guard both the bishop on b3 and the knight on d6.

Black can play **Bxd6**, winning a piece.

Here's another example. It's White to play. Can you see which Black piece is overloaded?



The **Black queen** is overloaded. It is protecting the knight on e5, as well as guarding the d8 square.

White plays **Qxe5!** After ... Qxe5, White checkmates with 2. Rd8+ Ke7 3. Re8 mate.

If you see that one of your opponent's pieces is overloaded, then you should act quickly. The chance may not occur again.

Coast Rider 2011



Bob Jones writes:

"I hope you'll be following me during my 6,000 mile cycle ride around Britain's coastline, starting on 30 April. The main website - www.coastrider.org.uk - includes detailed maps of every one of the 98 daily 'stages'. The longest, along the flat coastline of Lincolnshire, is 105 miles!

You can also follow my progress through my Facebook page, as well as reading my Blog, which I hope to update daily:

www.facebook.com/Coastrider2011

<http://coastrider2011.blogspot.com>

It would be good to read some of your comments, if only to know that you are supporting me, in spirit at least.

So far, over £3,800 has been raised for the two charities - the Stroke Association and the Meningitis Research Foundation. If you haven't already done so and wish to make a donation, please go to the Coastrider website and click on 'Donate now'.

I'll be taking a portable chess set with me!"

CLUB OFFICIALS

Bury Knights JCC is run by a small committee, consisting of coaches and parents:

Damian Wallace	Chairman (parent)
Adrian Cannard	Treasurer (parent)
Laura Saenz	(parent)
Bob Jones	(Coach)
Scott Taylor	(Coach)

The Committee usually meets two or three times a year, to ensure that the Club is operating properly and within financial limitations. The next meeting is scheduled for **8 April**.

If any parent would like to join this Committee, they should apply to Bob Jones (bojoneschess@btinternet.com).

ANNUAL AWARDS

The following awards were presented to Club members on 1 April:

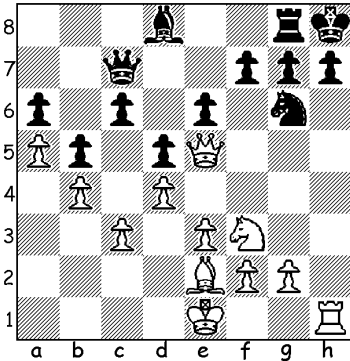
Adult Helper	Damian Wallace
Attendance award	William Sait / Aaron Saenz
Most promising newcomer	Sean Colliety
Most improved player	Emilia Jewell
Most enthusiastic member	Amaar Khan
Club Champion	(to be decided later)
Player of the Year	Mario Saenz

The Player of the Year trophy is awarded to the member who has demonstrated an excellent attendance level, high achievement, and is always willing to help.

PUZZLE PAGE

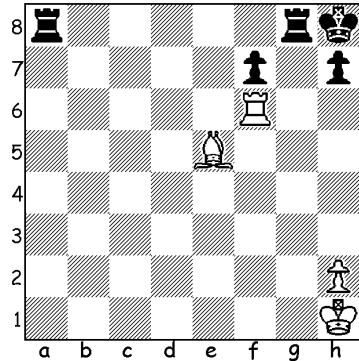
Four puzzles for you to solve over the next few months!. Bring your answers to the Club on the 9th September. The best set of answers will win a prize! In all cases it's White to play.

1



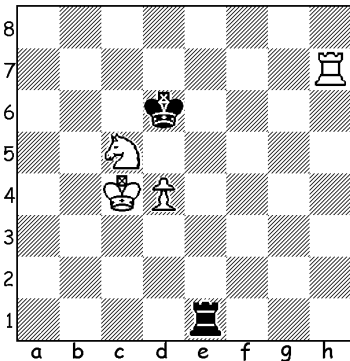
Mate in 2

2



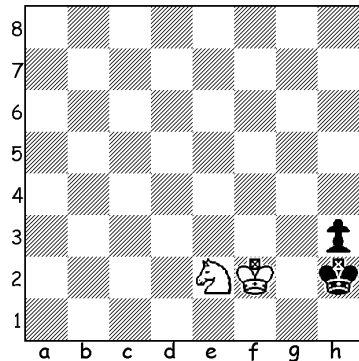
Mate in 3

3



Mate in 4

4



Mate in 5

Make sure you bring your answers to the Club on 9 September!