

# **CHESS TIPS FOR JUNIORS**

A series of leaflets for  
young chess players

## **DISCOVERED ATTACKS**

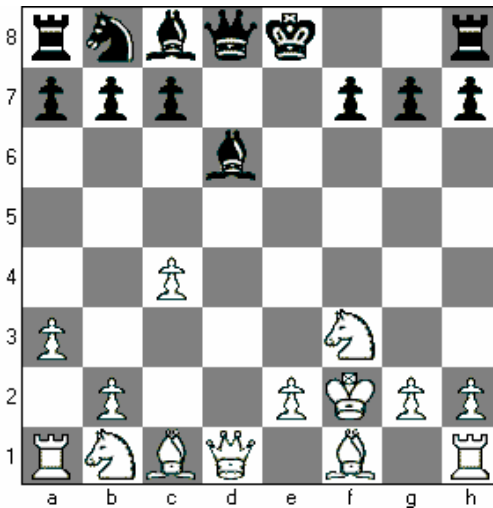
---

## 7 Discovered attacks

---

Winning at chess means checkmating your opponent. To make it easier to achieve this, it helps if you can win some of his pieces.

One of the best ways to do this is through a **Discovered Attack**. Have a look at the following position:



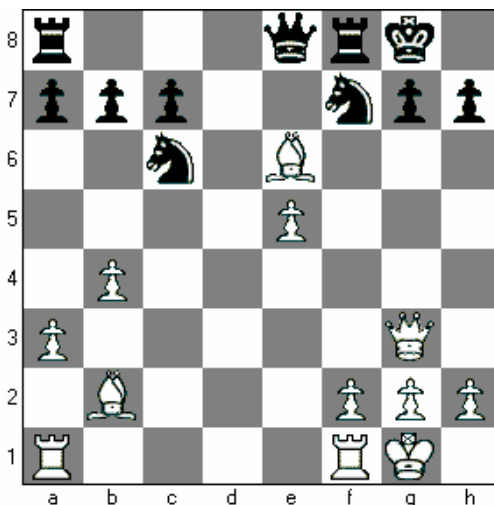
It's Black to move. Can you see how Black can check White's king and win his queen?

Answer: Bg3+

Although the term 'Discovered' attack is used, it is really 'Uncovered', because a piece or a pawn moves off a line and at the same time **uncovers** an attack by another piece.

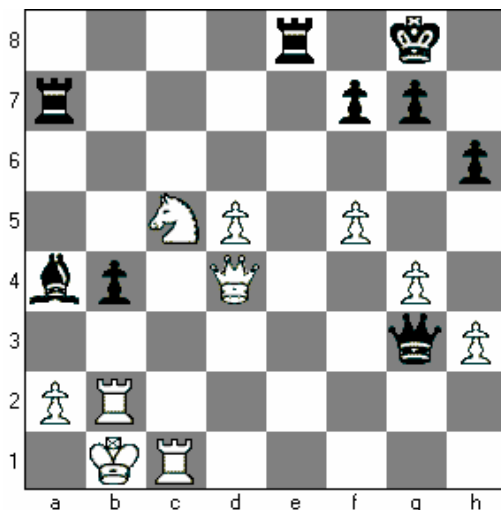
Discovered attacks can be extremely powerful, as the piece moved can make a threat as well as the attack along the uncovered line. So the discovered attack often results in **two** separate threats.

Here's an example from a recent game played at the Bury Knights Junior Chess Club:



White would like to be able to checkmate on g7, but at present the bishop on b2 is blocked by the pawn on e5. White now played Bd7, attacking the Black queen. After Qxd7, White played e6, again attacking the queen. But this also opens up the diagonal. Black cannot defend against the two threats of exd7 (winning the queen) and Qxg7 checkmate.

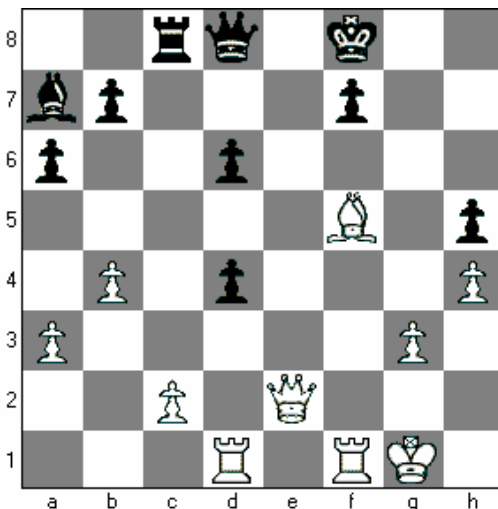
You should always be on the lookout for pieces that are unprotected. In the following position the Black rook on a7 is unprotected. Can you see the move that White played?



Not only is the Black rook on a7 unprotected, but it is on the same diagonal as the White queen. So White played Ne6, threatening checkmate on g7 and at the same time attacking the rook with the queen. Black was forced to take the knight (fxe6) and White played Qxa2, winning a rook for a knight.

Sometimes you can **discover**

**check**, which is an even more powerful version of a discovered attack. In the following position, notice the position of the White king - it is on the same diagonal as the Black bishop on a7:



Black played d3+, discovering check with the bishop and at the same time attacking White's queen.

So, before you make your move, look around to see if there's anything better. Often, a good move such as a discovered attack or discovered check is not the most obvious one.

See if you can spot a move that wins Black's queen:  
(don't look at the answer!)

Answer:  
Bb5+

