

CHESS TIPS FOR JUNIORS

**A series of leaflets for
young chess players**

CHESS NOTATION

1 Chess notation

These leaflets will use letters to describe the files (a to h) and numbers to describe the ranks (1 to 8) on a chessboard. In this way every square has its own unique reference. For example: f6; g7; b4.

It is important that you understand how to write moves down. Each piece is given a capital letter:

King	=	K
Queen	=	Q
Rook	=	R
Bishop	=	B
Knight	=	N

You will see that the Knight is given the letter N as the King already has the K.

Pawns have no letter - any move by a pawn is shown by the square it is moving to.

Some examples:

Qb4 The Queen moves to the square b4

Ra6 The Rook moves to the square a6

e4 A Pawn moves to e4

If a move involves taking a piece, the symbol 'x' goes after the first letter. So if the Queen takes a piece (any piece) on b4, you would write Qxb4. You don't have to write the name of the piece you are taking.

If a pawn takes a piece you only have to write the name of the file (a to h) that the pawn moved from, to the square the pawn moves to. So if the pawn on e4 takes another pawn (or any piece) on d5, you write exd5.

If you check your opponent, you add a plus sign (+) to the move. So, for example, if your Queen moves to e8 and gives check, the move is written Qe8+. If it is checkmate, you write Qe8++.

Sometimes there is a choice of two pieces which can move to the same square. For example either rook may be able to move to, say, the square a1.

In that case you have to describe which rook you want to move by adding either the file letter or the rank number, as follows:

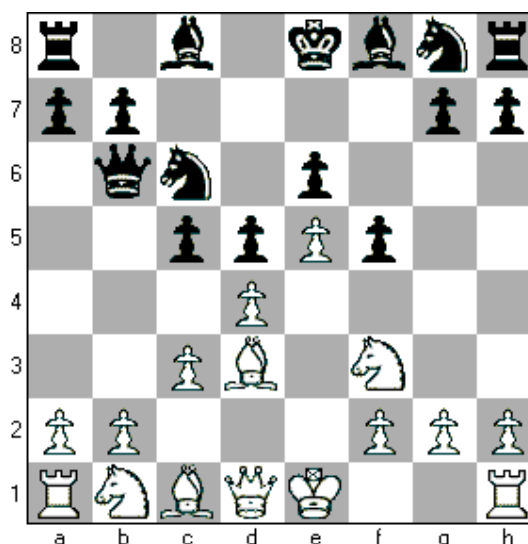
If a rook on a8 is moving to a1 you would write Raa1 or R8a1

If a rook on h1 is moving to a1 you would write Rha1 or R1a1

There are two other moves that you must know how to write: Castling and en passant. If you don't understand what castling or en passant is, see the leaflet that covers each subject (to be issued soon).

Castling: There are two ways of castling - king side or queen side. If you castle on the king side (the most common), you would write O-O. If you castle on the queen side (also known as the long side) you would write O-O-O.

En passant: This happens when a pawn is moved two squares from its starting square to be next to an opponent's pawn which has already reached the fifth rank. Your opponent can then take your pawn as if it had only moved one square (see diagram below):



In this position Black has just played f5. If White takes the pawn *en passant* it is written exf6 (NOT exf5).

Finally, when a Pawn reaches the back rank it is promoted to another piece, usually a Queen. This is written as e8Q, for example. If for some reason you promoted to a Knight you would write e8N.

EXERCISES

In the following diagrams, draw a line showing each move:

1

Qxb4

2

Rfxf6

3

e8Q+

4

e4

5

fxe5

6

O-O